



GIA
GEM TRADE LABORATORY®

New York Headquarters
580 Fifth Avenue | New York, NY 10036-4794
T: 212-221-5858 | F: 212-575-3095

Carlsbad
5355 Armada Drive | Carlsbad, CA 92008-4699
T: 760-603-4500 | F: 760-603-1814

**COLORED DIAMOND
IDENTIFICATION AND ORIGIN REPORT**

March 25, 2004

Shape and Cutting Style OVAL BRILLIANT
Measurements 5.91 x 3.71 x 3.10 mm
Weight 0.41 carat

Color

Origin NATURAL
Grade FANCY INTENSE
..... YELLOW
Distribution EVEN

Comments:

None

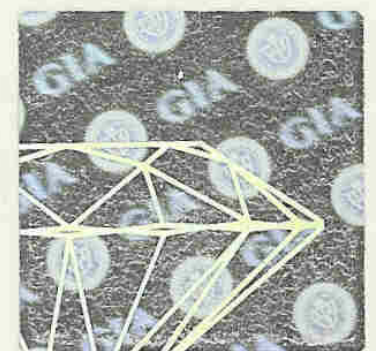
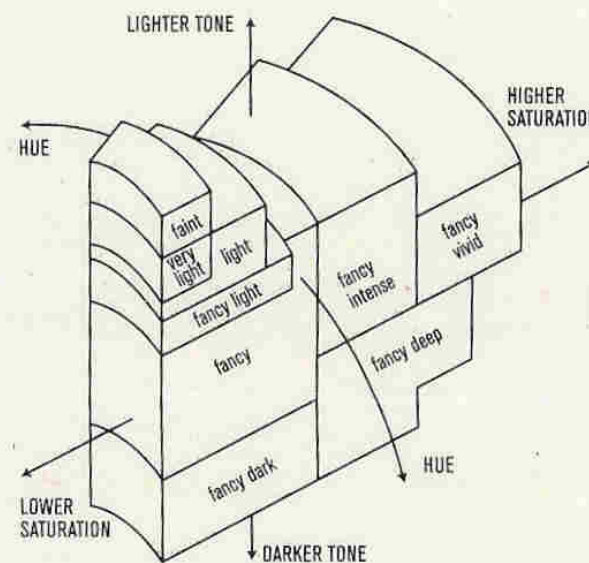
GIA REPORT 13176120



This Report is not a guarantee, valuation or appraisal. This Report contains only the characteristics of the diamond described herein after it has been graded, tested, examined and analyzed by GIA Gem Trade Laboratory under magnification, and/or has been inscribed, using the techniques and equipment available to GIA Gem Trade Laboratory at the time of the examination and/or at the time of being inscribed, including magnification, master color comparison diamonds, standardized viewing environment and light source, electronic carat balance, high intensity short wave fluorescence imaging system, optical measuring device, micro laser inscribing device, ProportionScope®, ultraviolet lamps, millimeter gauge, additional visual color comparators, spectroscope, Illuminator Polariscope®, immersion liquids, ultraviolet-visible and infrared spectrometers, X-ray fluorescence spectrometer, gamma-ray spectroscopy systems, beta radiation scintillation detector, radiation survey meter, X-ray luminescence equipment, and ancillary instruments as necessary. The recipient of this Report may wish to consult a credentialed Jeweler or Gemologist about the information contained herein.

GIA
COLORED
DIAMOND
SCALE

Illustration of GIA
fancy color grade
interrelationships



IMPORTANT DOCUMENT, STORE SAFELY

The security features in this document, including the hologram, security screen, microprint lines and chemical sensitivity, in addition to those not listed, exceed document security industry guidelines.

**NOTICE: IMPORTANT
LIMITATIONS ON BACK**

COPYRIGHT ©2000 GEMOLOGICAL INSTITUTE OF AMERICA, INC.